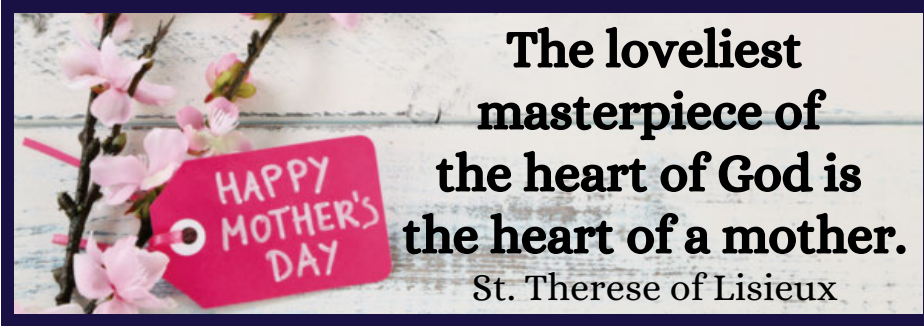




Resurrection Catholic Parish

Becoming Disciples of Jesus and Stewards of God's Gifts

Sixth Sunday of Easter
May 13 & 14, 2023



Celebrating Moms

This past week I was spending a few minutes just sitting in my La-Z-Boy and watching a movie. That doesn't happen very often, but it was a Saturday night and it had been a long week, so a movie seemed to be just the ticket. I watched the end of one of my favorite movies, *Hoosiers*, when the advertisement for the second feature came on—*Knute Rockne, All American*.



How could I resist! An old movie from 1940 about the famous coach at my favorite university, the University of Notre Dame (Ok, maybe second favorite behind my alma mater, St. John's University!) How could I beat Pat O'Brien as Rockne and future president, Ronald Reagan as the Gipper?

But that's not what really got to me. You see, when I was in grade school and high school, it was my dream to attend Notre Dame and maybe even play football there like my hero, Joe Montana. Yet, as I neared my junior year and began the process of taking the ACT entrance exam for college, coupled with my very average grades, I knew I would never qualify for an elite school like ND. But there was one person who knew what was in my heart and believed I could do anything, even qualifying for Notre Dame--my Mom. During my senior year, my Mom gave me one of those Argus posters that contains beautiful photos and inspirational sayings. This particular poster had an image of a rainbow with the words "You can achieve anything you put your mind to." And my Mom had written the words, "Notre Dame here you come" in the corner of the poster. Watching Rockne and the Gipper reminded me of how much my Mom believed in me, supported me, and helped to make me the person that I have become.

In our Gospel reading from St. John today, Jesus reminds the disciples that an Advocate, the Holy Spirit, would be sent to them in order to give them the courage and strength to carry out his mission once he was lifted into heaven. Jesus states: "I will not leave you orphan. I will come to you." Jesus believed in his disciples, supported them, and knew that they could carry on with the mission of the Church long after he was gone.

Who are the women in your life that believed in you even when you didn't? When has a woman supported you during rough times or aided you towards moments success?

This weekend, we celebrate the women in our lives who have believed in us, supported us, and helped to make us into the people that we have become. Thank you Moms and all mother figures in our lives. This weekend we celebrate YOU!

Tony

333 Hilltop Drive
Green Bay, WI 54301
920-336-7768

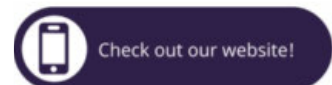
Mass Schedule
 Saturday 4:00 PM
 Sunday 8:30 AM & 10:30 AM
 Monday-Friday 8:05 AM

Live Streaming Masses
www.gbres.org/live

Reconciliation
 Saturday
 3:00 - 3:30 PM
 or by appointment

Office Hours
 Monday-Thursday
 8:30 AM - 3:00 PM
 Other Times by Appointment

STAY CONNECTED



www.gbres.org

Emails/Text Alerts
 Text GBRES to 84576 or
www.gbres.org/flocknote

[gbresurrection](https://www.facebook.com/gbresurrection)

Please ask an usher about our accessibility options and low gluten hosts.





May: The Month of Mary

For centuries, the Catholic Church has set aside the entire month of May to honor Mary, Mother of God.

Everyone is invited to join in praying a decade of the Rosary before each weekend Mass.

Baby Bottle Boomerang

Mothers' Day thru Fathers' Day



This weekend, Resurrection launches the annual Baby Bottle Boomerang project in partnership with Love Life East to support of families with infants and toddlers

Information and instructions are found on the bottles. Please take a bottle home as a reminder and then return the bottle anytime through Fathers' Day. You may also donate online at weshareonline.gbres.org

Resurrection is Walking with Moms in Need!



What Does Scripture Say About... Caring for God's Creation

Wednesday, May 17

6:30 PM

In the Parish Hall or Online

Guest Speaker: Dave Poister, Ph.D.

Dr. Poister is the professor of Chemistry and Environmental Science at St. Norbert College. One of Dr. Poister's interests is the exploration of how the dialogue between science and religion can be used to understand and advance the human condition.

What does the Bible say about creation?
What does it say about our responsibility to care for and be stewards of creation?
These and more questions will be included in this important conversation.

Participate in person or online at www.gbres.org/live or watch anytime at www.gbres.org/townhalls

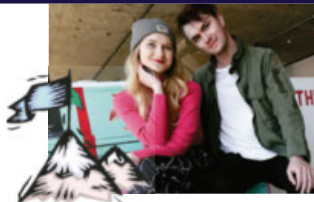
Hilltoppers Gathering

Luncheon

Tuesday, May 23

12:30 PM

Village Grille



Celebrate the final Hilltoppers Gathering of the year with food, community, and music!

Lunch is \$10 per person.

Register by calling the office or online at www.gbres.org/hilltoppers

Featuring Music by **7000apart**

quality, honest, and straight from the heart music

Mass Intentions & Parish Activities

Saturday, May 13

3:00 - 3:30 PM

Individual Reconciliation (DC)

4:00 PM

Mass ☩ Members Resurrection Parish

Sunday, May 14

Sixth Sunday of Easter

8:30 AM

Mass ☩ The Deceased Members of the Stencil & Defnet Families

10:30 AM

Mass ☩ Margaret Pichler and Carol Brice

Monday, May 15

8:05 AM

Mass ☩ Dennis Campion

Tuesday, May 16

8:05 AM

Mass ☩ Jeanne & Bob Flatley

8:45 AM

Scripture Study (FR)

Wednesday, May 17

7:00 AM

Small Group Prayer & Discussion (DC)

8:05 AM

Mass ☩ Athanasius Gunawan

6:00 PM

Pickleball (Kiwanis Park)

6:30 PM

Town Hall Meeting (PH)

Thursday, May 18

8:05 AM

Mass ☩ Jane Kaster

9:00 AM

Parish Book Club (PH)

1:00 PM

Weekend Scripture Study (Zoom)

Friday, May 19

8:05 AM

Mass ☩ Ronald Flahive and Jerry McMullen

Saturday, May 20

4:00 PM

Mass ☩ Donald Pollack

Sunday, May 21

The Ascension of the Lord

8:30 AM

Mass ☩ Rosemarie Gemignani

10:30 AM

Mass ☩ Members Resurrection Parish

Resurrection Location Key

C - Church **DC** - Day Chapel **FR** - Family Room

GA - Gathering Area **PH** - Parish Hall

ZOOM - Contact Office

Please join in prayers of gratitude for the little one baptized into our family of faith.

Abigail Grace Venstrom

daughter of Andy & Paige Venstrom
on May 6, 2023



Please pray for the family and friends of our Parish Family Member

Patrick Mahoney

June 21, 1930 - May 4, 2023

May God's promise of new life be a source of comfort to them all.



Resurrection Prayer Chain

If you have a prayer need or would like to join the pray-ers, call DeDe Szurgot at 920-336-9526 or Bonnie Lemerond at 920-471-6545. Confidentiality is assured.



Weekly Sacrificial Giving



May 2 - 8, 2023

Envelope Collection	10,911.00
ACH/Online Giving	2,885.67
Loose	575.80
Votives	46.00
Total for the Week	\$14,418.47



The Word Among Us

Resurrection Parish has copies available of the daily prayer resource The Word Among Us. Copies can be found at all of the entrances to church and at the receptionist desk in the Welcome Center.

The resource contains the daily Scripture readings proclaimed at Mass as well as a daily meditation.

Suggested donation is \$1.00.

For more information please see Tony Pichler.

StreetLights Outreach Block Party

Join together with other parishioners and people from the wider community to provide a safe, vibrant picnic experience for and with the people who live in the Seymour Park area.

Volunteers are needed to set-up, cook, serve food and drink, lead children's activities, clean-up, and distribute flyers to the neighbors.

If you are able to help out with this important outreach in our community, please use the Sign Up Link:

bit.ly/streetlightsMay2023

Or feel free to come at 5:00 PM and join in the fun. Your presence makes a difference to everyone who comes. Bring a lawn chair and see you there!

Friday, May 19th
5:00 - 6:30 PM

Seymour Park
330 S Oakland Ave

Journeying to Emmaus

The Journeying To Emmaus With Real Presence Listening Process

We are on a journey as a parish community throughout the Easter Season, listening to the hopes and dreams of every parishioner.

Take a moment to share your thoughts through a short survey and/or a SWOT method that identifies the Strengths, Weaknesses, Opportunities, and Threats that are present in our parish community at this time.

Share your thoughts online at

www.gbres.org/listening.

The hard copies of the survey and SWOT are also available at all church entrances.

We would love to hear from you by Pentecost on May 28.
Thank you for being on the journey!

Smiles Needed to Celebrate 60 Years

In September, Resurrection will celebrate
60 Years of Faith in Action:

Welcoming and Loving All God's People All the Time.

We are in need of smiles for a new photo directory which is available online or through print on demand booklets.

Photos will be taken after weekend Masses
April 15 - July 2

or submit your own favorite photo to
photodirectory@gbres.org.

There are no photos to purchase and will only take a few minutes of your time. Please come see us in the Day Chapel and show us your smiles!



RESURRECTION PHOTO DIRECTORY

Online



Each person is a beloved member of our parish family.
Our online directory and mobile apps
can help us call each other by name.

WE NEED YOUR PHOTO

- Email us your favorite photo to photodirectory@gbres.org
- Stop in Chapel and a volunteer will take a photo after weekend Masses
- Invite a member of the Care Ministry Team to your home to take a photo if you are not able to come to church.

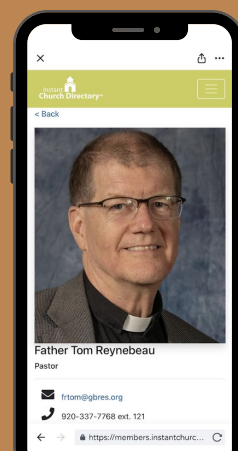
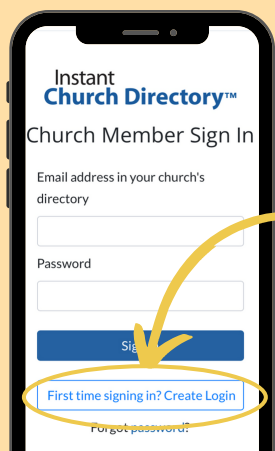
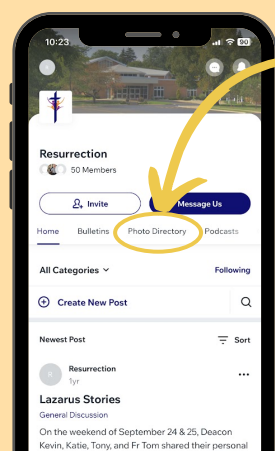
OPEN THE RESURRECTION APP

- Install App
 - Go to the Apple App Store or Google Play Store
 - Search "Resurrection Catholic Parish"
 - OR scan QR Code
- If you already have the Res App, ensure it is updated and that you are a member

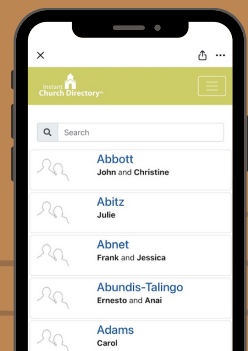
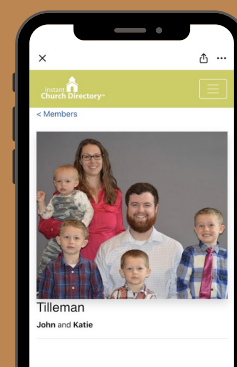


ACCESS THE DIRECTORY

- Go to the "Photo Directory" Screen and select "Access Res Directory"
- Click "First Time Signing In? Create Log in"
- Enter your email and create password. Check your email for verification link.
- If you have any problems see the Photo Help Desk by the day chapel after Mass or stop in the parish welcome center during office hours.



VIEW RES STAFF & FAMILIES SEARCH FOR MEMBERS BY NAME





HELP WHENEVER YOU NEED FOR WHATEVER YOU NEED

It's okay to ask for help.

Resurrection is committed to ensuring you have the support you need when you need it.

The hotlines and helplines below may help you in whatever situation you are facing.

Call, text, or chat 211 for help or resources not listed.

These are also listed online at www.gbres.org/findhelp

THE UPPER ROOM CRISIS HOTLINE

FAITH-BASED HOTLINE IN THE
CATHOLIC TRADITION

Call 1-888-808-8724

HOPELINE

PROVIDING HOPE, HELP,
AND SUPPORT

Text HOPELINE to 741741

ALZHEIMER'S & DEMENTIA HELPLINE

Call 800-272-3900

Chat Online at alz.org/help-support

REPORTING CHURCH ABUSE

If you know of an incident of sexual abuse of a person who is now under the age of 18 by a priest, deacon, employee, or volunteer, PLEASE IMMEDIATELY CALL THE CIVIL AUTHORITIES AND THEN THE DIOCESE.

If the person was a minor but is now an adult, please contact:

Office of Safe Environment
Diocese of Green Bay
920-272-8174 or 1-877-270-8174

We always encourage you to report the incident to civil authorities.

SUICIDE & CRISIS LIFELINE

Call or Text 988

Chat Online at 988lifeline.org

BROWN COUNTY CRISIS CENTER

Call 920-436-8888

TREVOR PROJECT FOR LGBTQ UNDER AGE 25

Text START to 678678

Call 1-866-488-7386

Chat Online at TrevorChat.org

HUMAN TRAFFICKING HOTLINE

Call 888-373-7888

Text BEFREE to 233733

DOMESTIC VIOLENCE HELPLINE

Call 920-212-7233

Online at 920212safe.com

SAMHSA HELPLINE FOR INDIVIDUALS AND FAMILIES FACING MENTAL AND/OR SUBSTANCE USE DISORDERS.

Call 1-800-662-4357



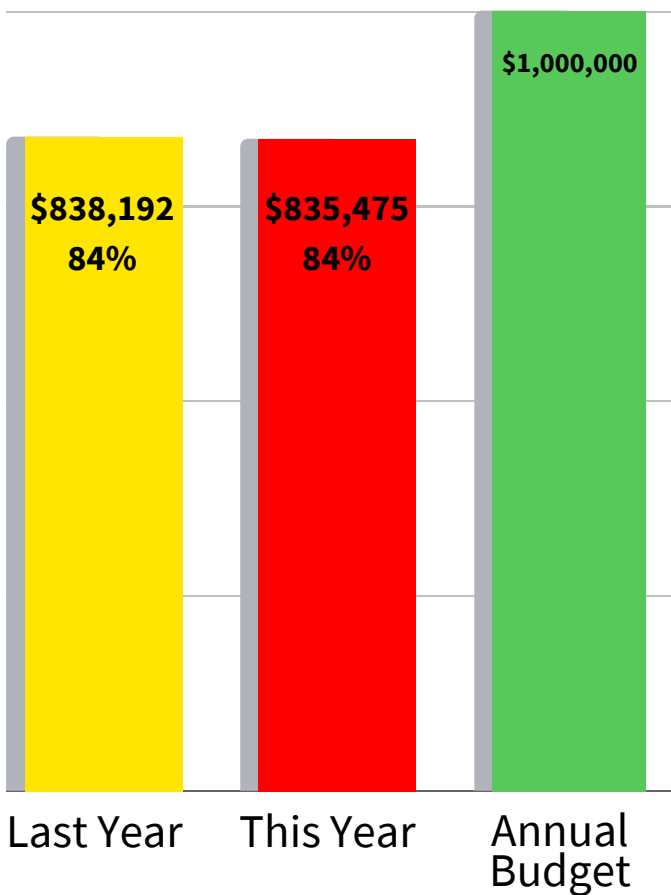
*Resurrection is Rising Toward
Loving All God's People All The Time*
If you know of a hotline, helpline, or resource that you believe would be beneficial to our parish family, please inform the parish office at 920-336-7768 or resurrectionparish@gbres.org



SACRIFICIAL GIVING ANNUAL REPORT

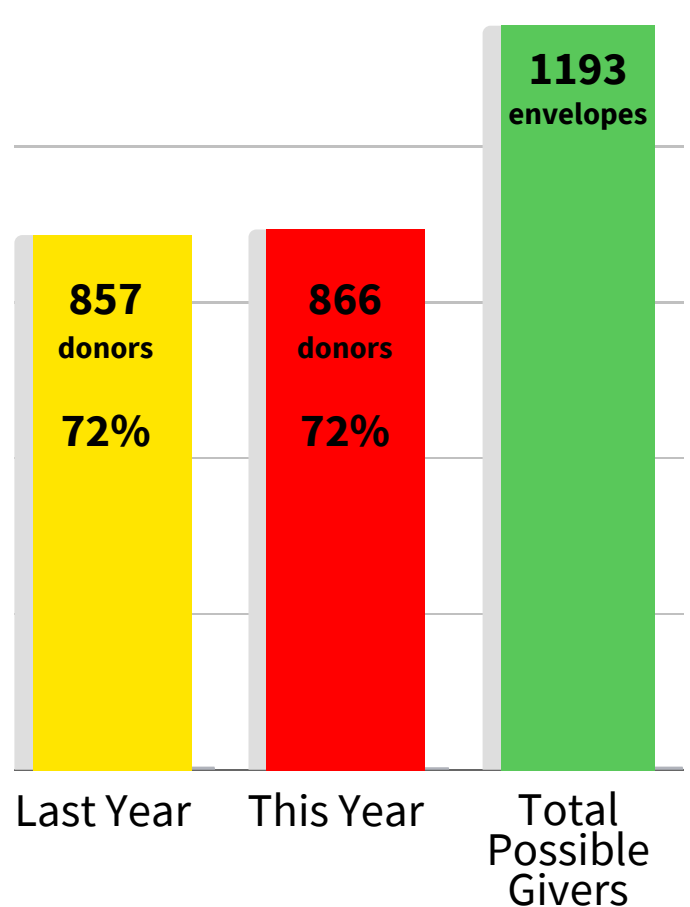
JULY 1, 2022 TO APRIL 30, 2023

Monetary Support



- + We are close to last year's numbers.
- + We need the next two months to average \$80,000 in sacrificial giving to meet our annual budget of \$1,000,000.

Donors



- + Our number of giving units is consistent with last year.
- + About 72% of giving units are contributing on a regular basis.

FINANCIAL GIVING



Resurrection does not require you pay to be a member of our parish family. However, the concept of tithing is biblical and encouraged. This financial response to Christ should be “of the essence” of our faith, not simply the leftovers.

We invite you to become an active participant in the parish’s Sacrificial Giving program, a planned personal response of Church members. True tithing is 10% of your income. The Church encourages Catholics to achieve this level of support as follows: 5% of income to the Church and 5% to other charities.

Contact Bill Campion at 920-336-7768 or bcampion@gbres.org with any questions or if you would like to adjust your giving.

CHECK OR CASH

We offer an envelope system. Each year you will be given a booklet of envelopes for your check or cash donations. These can either be mailed to the parish office or placed in the Sunday collection. By using your envelopes it ensures more accurate posting of your contributions. You may also use the envelopes provided in the back of the pews.

ONLINE GIVING

A secure web site, WeShare, allows you to control your gifts to the parish. WeShare not only allows you to set up your payments via your personal checking/savings account, it also accepts major credit cards. You can set up a one time gift or recurring gifts to the parish. Go to gbres.weshareonline.org, scan the QR code below or call Bill Campion to set up your online giving.

APPRECIATED INVESTMENT PROPERTY

Stock, mutual fund shares, bonds, and other such property held more than one year have tremendous tax advantages. By giving the asset to the church, then letting the church sell eliminates potential capital gains taxes and can increase the after tax proceeds.

Give Online with WeShare



gbres.weshareonline.org

Resurrection Parish Staff

To reach a parish staff member, please call the parish office at 920-336-7768 plus their extension

Fr Tom Reynebeau	121	Pastor	frtom@gbres.org	Pastoral Care, Hospital & Home Visits, Sacrament of the Sick
Dcn Kevin DeCleene	127	Deacon	kdeclene@gbres.org	Marriage, Parish Vitality & Planning, Prayer & Care, Small Groups, Stewardship
Dcn Mike Grzeca		Senior Deacon	m49g@att.net	Spiritual Listening
Dcn Roger Vandervest		Senior Deacon & Spiritual Director	rogervandervest@gmail.com	Spiritual Direction
Michele Becker		Music Coordinator	mbecker@gbres.org	Music & Choir Direction
Bill Champion	128	Accountant	bcampion@gbres.org	Finances
Karolyn Efferson	122	Faith Formation	kefferson@gbres.org	Faith Formation, Sacramental Prep, Family Life, Health & Wellness, Parish Planning
Wayne Efferson	124	Liturgist	wefferson@gbres.org	Liturgy
Kay Franz	221	Fr Allouez School Principal	kfranz@gracesystem.org	Father Allouez School Principal
Katie McAllister	129	Communications & Technology Coordinator	kmcallister@gbres.org	Technology, Bulletin, Media
Susan Perrault	130	Pastoral Minister	sperrault@gbres.org	Care Ministry, Baptism, OCIA
Tony Pichler	125	Mission Outreach Director	tpichler@gbres.org	Parish Planning, Adult Enrichment, Social Justice
Mary Vanden Busch	123	Business Administrator & Confirmation Coordinator	mvandenbusch@gbres.org	Parish Management, Middle & High School Formation, Confirmation

Oak Street Cafe
 Open Daily 7am - 1pm
 926 Oak Street • 347-0508

Care for All Ages, Inc
 Assisted Living and Childcare
 "WHERE YOUNG AND ELDERLY COME TOGETHER"
 1308 S. Norwood Ave
 Green Bay, WI 54304
 (920) 432-8119 Assisted Living
 (920) 432-3993 Childcare
 www.careforallages.com

Geimer & Orcutt
 - LAW, S.C. -
 WILLS, TRUSTS, ESTATE PLANNING
 A Family Firm Since 1990
 Rober H. Geimer
 Mary Rose (Geimer) Orcutt
 *Certified as an Elder Law Attorney by the National Elder Law Foundation
 920-432-4433
 2333 Riverside Dr. • Green Bay, 54301

WAYNE'S DOOR
 Sales & Service
 1911 W. Wisconsin Ave. • Appleton WI, 54914
 MATT VARGO - Division Manger
 Cell 920-378-2294
 Emergency 920-735-9055

LAMERS
 The Passenger Professionals
 BUS DRIVERS NEEDED
 \$22.50/hr & bonuses up to \$2,400
 GoLamers.com/careers • 920-496-3600

The UPS Store
 PLEASE SUPPORT OUR PARISH
 SHIPPING EXPERTS FOR YOUR NEEDS
 1794 Allouez Ave, Suite C
 Green Bay, WI 54311
 (920) 884-6681
 www.greenbay-wi-4170.theupsstorelocal.com

The Breakfast, Lunch & Dinner Hot Spot of De Pere
 The Nicolet Restaurant of DePere
 Est. 1963
 Check out our new menu items and coffee drinks! Daily
 525 Reid St. 920.336.8726
 Sun 7am-4pm • Mon-Thur, Sat 6am-4pm
 Fri 6am-7pm

A CAREER CHANGE CAN FEEL LIKE A LEAP OF FAITH.
 Find independence and flexibility with an organization that invests in you.
We're different by design.
 Ready to start a rewarding career? Contact Kristin O'Connell.
 (920) 432-8824 | kristin.oconnell@cfl.org

SINKLER HEATING & COOLING, INC.
 • Commercial • Residential
 • Industrial • 24 Hour Service
 1-920-465-6863
 1816 Allouez Avenue • Green Bay, WI 54311

THE RITE PLACE SUPPER CLUB Bar & Grill
 BANQUETS & FUNERAL DINNERS, DAILY DINING
469-0055
 1580 Bellevue Green Bay Parishioner Owned

LET'S GROW YOUR BUSINESS
 Place Your Ad Here and Support Our Parish!
CONTACT ME
Jim Fischer
 jfischer@4LPi.com
 (800) 950-9952 x2106

Majestic Tile Co
 Serving your ceramic tile contracting and retail needs for over 60 Years!
 1308 Bellevue Street • Green Bay
 • 920-468-0854 •
 • www.majestictileco.com •
 Kim Thompson- Parishioner

K. KELLY, INC.
 HEATING • COOLING • PLUMBING
 RADON SYSTEMS
 No Cost Estimates & 5% OFF Any SERVICE only with this ad
 Kevin Kelly • Parish Member
 2057 Bellevue St., Green Bay, WI 54311
 (920) 469-3500 • www.kkellyinc.com
 *Does not include maintenance and installation

Dan Popkey's De Pere Tax
 Full Tax Service Same Day Returns
 E-Filing
 Book online: www.meetme.so/danpopkey
Historic Post Office Building
 416 George Street, Suite 103, De Pere
 920-621-8126
 danielpopkey@gmail.com • danpopkeysdeperetax.com

BRABAZON LAW OFFICE, LLC
 Attorney Shane L. Brabazon
 Owner/Managing Attorney
 221 Packerland Drive
 Green Bay, WI 54303
 Voted Best Law Firm
 920-494-1106 | www.brabazonlawoffice.com
 • Estate Planning • Personal Injury • Family Law • Criminal Law

Asphalt Seal & Repair
 Professionals In:
 • Asphalt Patching
 • Crack Sealing
 • Sealcoating
 • Bonded & Insured
 (920) 338-0130
 Check us out at
 www.asphaltsealandrepair.com
 2077 Enterprise Drive, De Pere, WI 54115

Sal's FOODS
 SERVING WISCONSIN COMMUNITIES SINCE 2006
 920.337.0299
 3623 South Webster Avenue
 OPEN 7AM - 8PM 7 DAYS A WEEK
 www.salsfoodcenter.com

Ryan FUNERAL HOME & CREMATORY
 920-336-3171
 DePere, WI
 Dominic Maino
 Apprentice Funeral Director
 Parishioner
 www.ryanfh.com

Honoring and Remembering with Care.
COTTER
 Funeral & Cremation Care
 (920) 336-8702 | cottesfuneralhome.com

CMS Retirement Income Planning LLC
 YOUR ARCHITECT FOR YOUR FINANCIAL FUTURE
 Would you give me the privilege of helping you make great decisions with your money?
Craig Siminski
 CFP®, CLU, CASL, CPFA, AEP®
 Financial Planner
 Parishioner
 (920) 569-8363
 craig@cmsretirement.com
 cmsretirement.com
 2050 Riverside Dr., Green Bay, WI 54301
 Over 25 Years Investment Experience
 Securities and investment advisory services offered through SagePoint Financial, Inc. (SPF), member FINRA/SIPC. SPF is separately owned and other entities and/or marketing names, products or services referenced here are independent of SPF.

BroadwayAutomotive.com
 Ford HYUNDAI GENESIS CHEVROLET VW GMC Buick

ALLOUEZ CATHOLIC CEMETERY
 Save up to thousands and give your family peace of mind by pre-planning.
 2121 Riverside Drive • (920) 432-7585
 www.allouezcatholiccemetery.com

Thorne Plumbing, Inc.
 Serving De Pere and Surrounding Areas
920-336-6966

BENO PLUMBING
 Since 1926
 468-4777
 "Plumbing That Pleases"
 www.benoplumbing.com

Law Firm of CONWAY, OLEJNICZAK & JERRY, S.C.
 Phone: (920) 437-0476
 Website: lcojlaw.com

RE/MAX PORT CITIES
BONNIE VAN VONDEREN, REALTOR®
 Cell: 920-621-0982 | Office: 920-438-8000
 bvvanvonderen@new.rr.com
 2325 Verlin Road • Green Bay, WI 54311

Discover the Catholic Difference
 Rely on the Knights of Columbus to help protect your family's future.
 A name you know and trust.
 An organization you can believe in.
 Contact me today to learn more about our products
James J. Patz, FICF
 Field Agent
 920-264-8745
 james.patz@kofc.org

LIZER LAWN CARE & IRRIGATION
 The Grass is Always Greener on Our Side of the Fence
 (920) 468-1604 • GREEN BAY
 www.lizerlawn.net

MAYFLOWER GREENHOUSE
 726 Airport Dr. • Hobart
 920-869-2045
 Chris Beno, Parishioner

SUPPORT OUR ADVERTISERS!

AMERICAN FAMILY INSURANCE
 Kierstin Thompson Agency, LLC
 1445 North Rd, Ashwaubenon WI, 54313-5725 (920) 469-1200

WE APPRECIATE OUR ADVERTISERS!

Place Your Ad Here and Support our Parish!
 Instantly create and purchase an ad with
AD CREATOR STUDIO
 4lpi.com/adcreator

MAYFLOWER GREENHOUSE
 726 Airport Dr. • Hobart
 920-869-2045
 Chris Beno, Parishioner

AMERICAN FAMILY INSURANCE
 Kierstin Thompson Agency, LLC
 1445 North Rd, Ashwaubenon WI, 54313-5725 (920) 469-1200

WE APPRECIATE OUR ADVERTISERS!